

Sonavision Hermes Software Installation

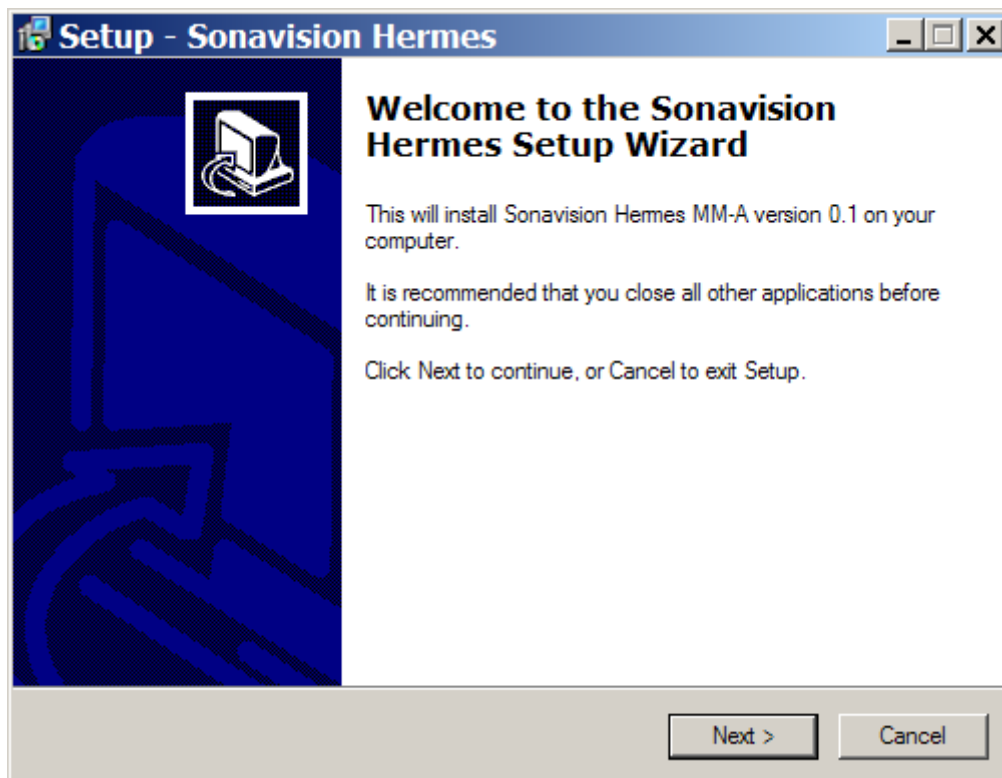
Quick Installation Instructions

- Locate and run setup.exe from the distribution CD, or from the directory into which the software distribution has been uncompressed
- Follow the on-screen instructions
- Attach the hardware to the PC via the USB port
- Follow the on-screen instructions

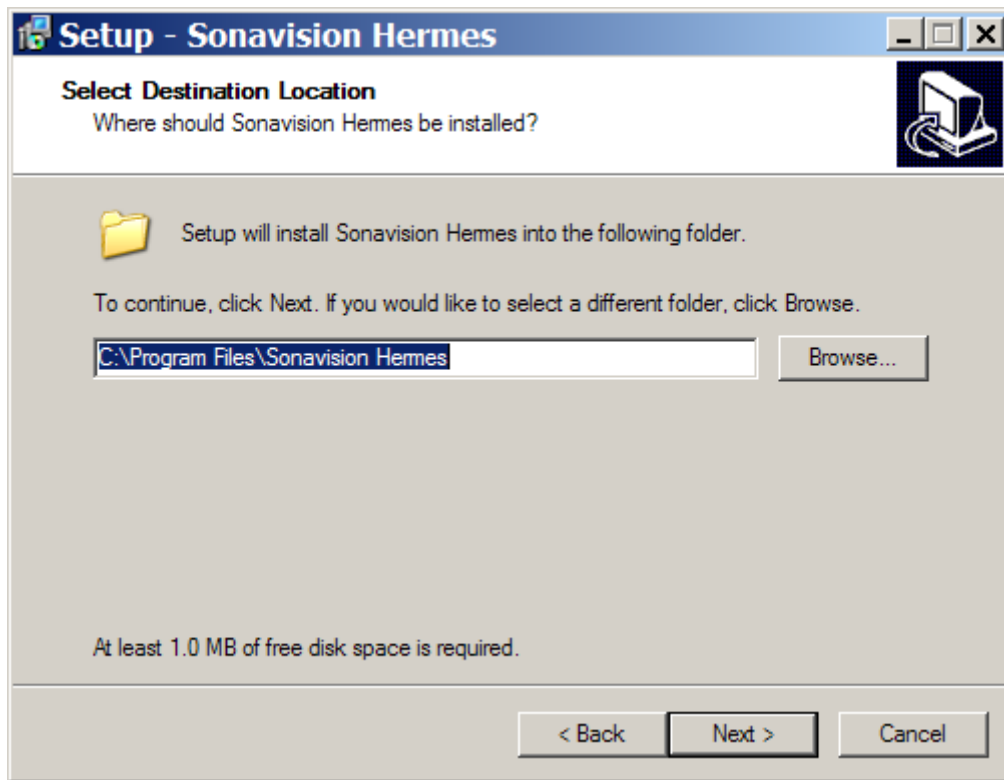
Detailed Installation Instructions

Ensure that the multiplexer board is **not** attached to the PC prior to installing the software. If the software distribution has been obtained in a compressed format (setup-compressed.exe), save the self extracting executable to hard disk, and double click to extract the file setup.exe. If the software distribution has been obtained on CD setup.exe will be in the Hermes directory.

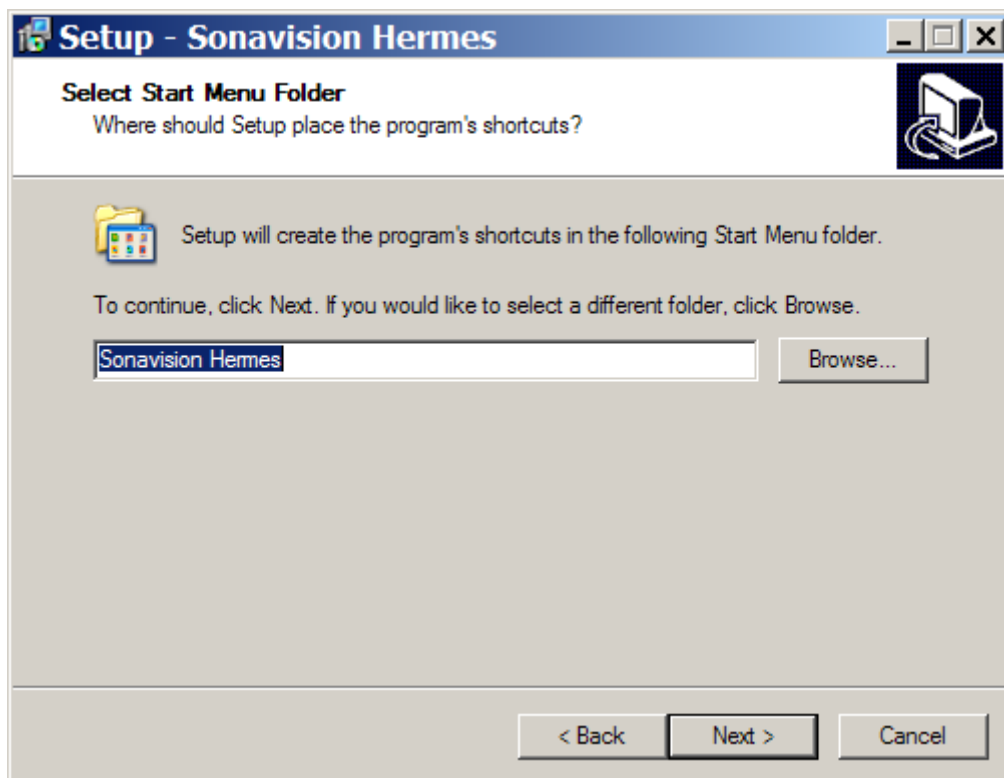
1. Locate and run setup.exe – this will open the setup screen shown below.



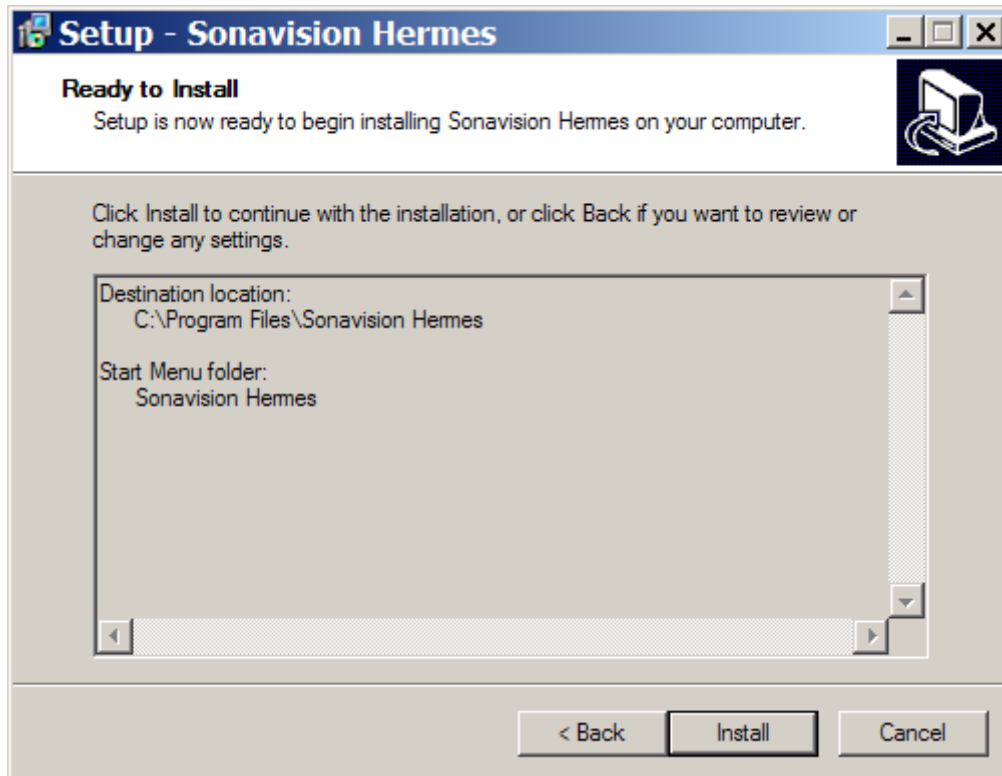
2. Click next, and from the following screen either browse to the desired installation directory or accept the default (C:\Program Files\Sonavision Hermes)



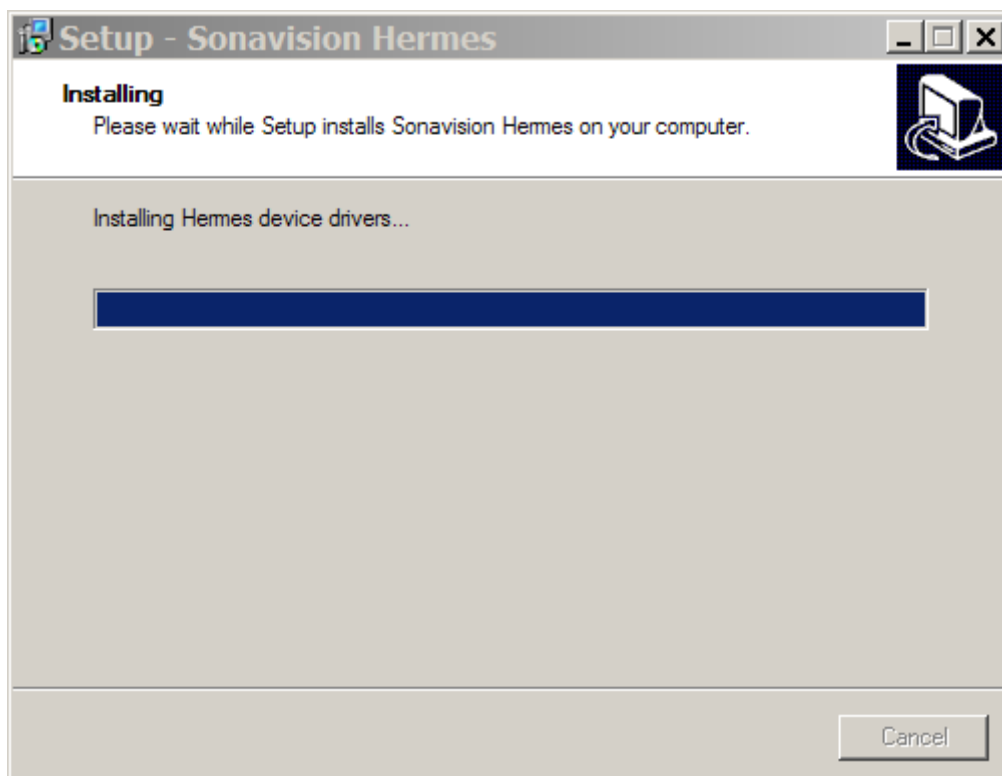
3. Click next to continue, and on the following screen enter the desired start folder name, or accept the default (Sonavision Hermes)



- Click next, and if the installation settings are correct click on Install.



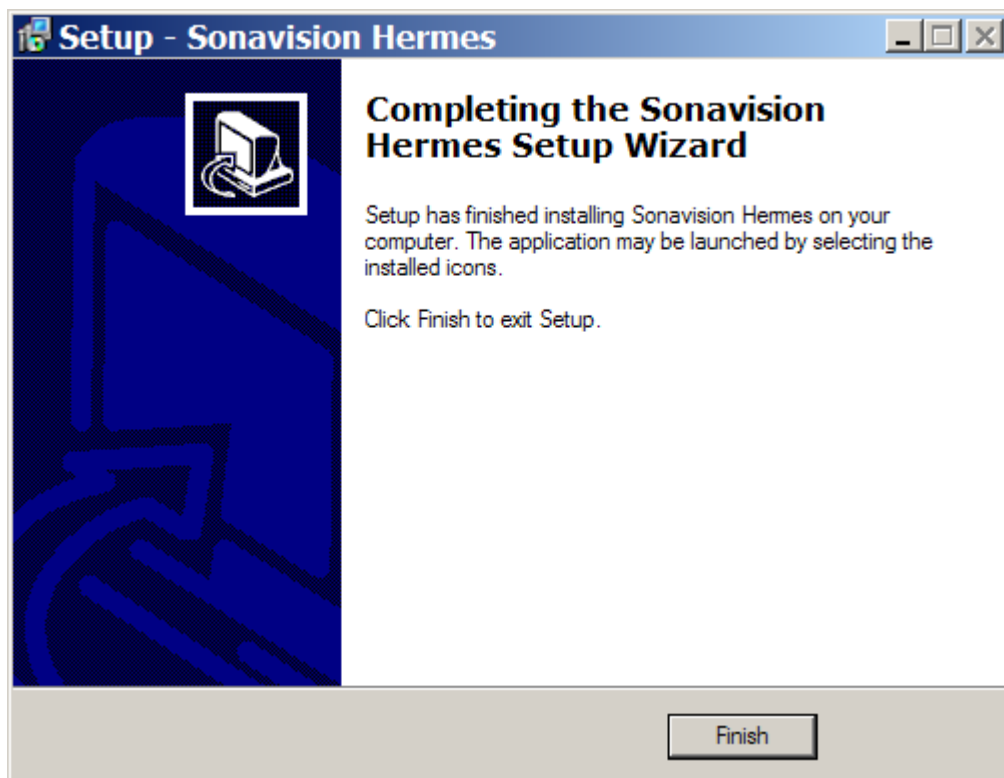
- Several progress screens will display in quick succession. When the device driver installation starts (indicated by the screen below)



6. A warning message will be displayed by Windows stating that the device driver has not been validated by Microsoft. This warning is normal – click on “Continue Anyway” to continue the installation.



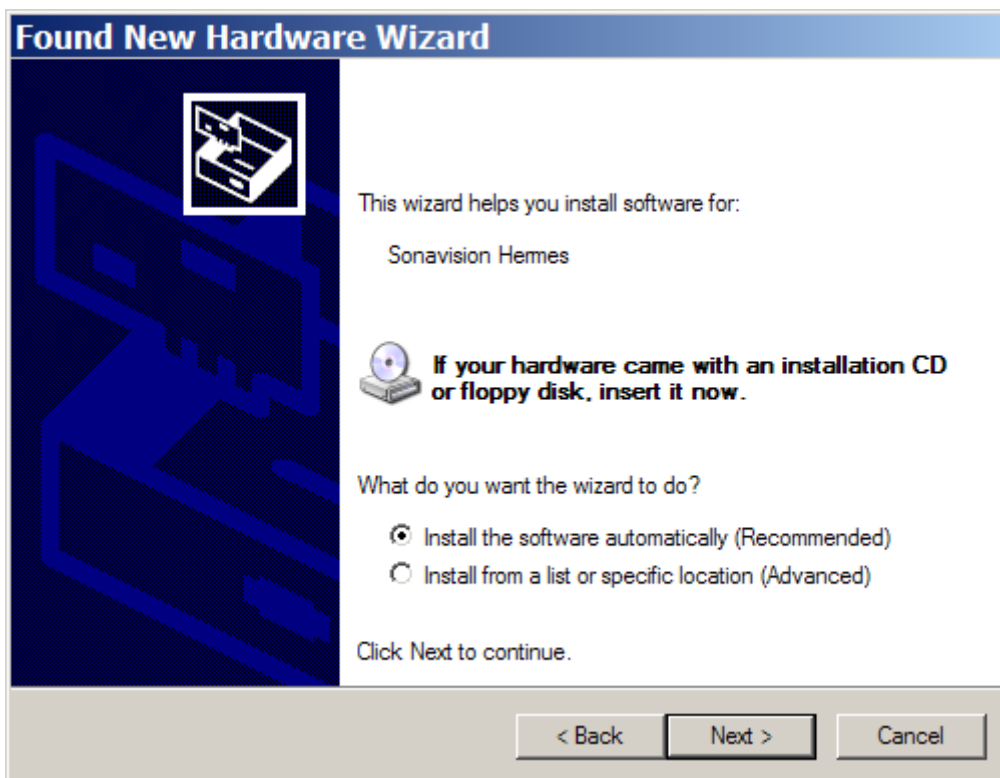
7. Once all required files have been installed on the system, the following screen will be displayed. Press “Finish” to exit the setup wizard.



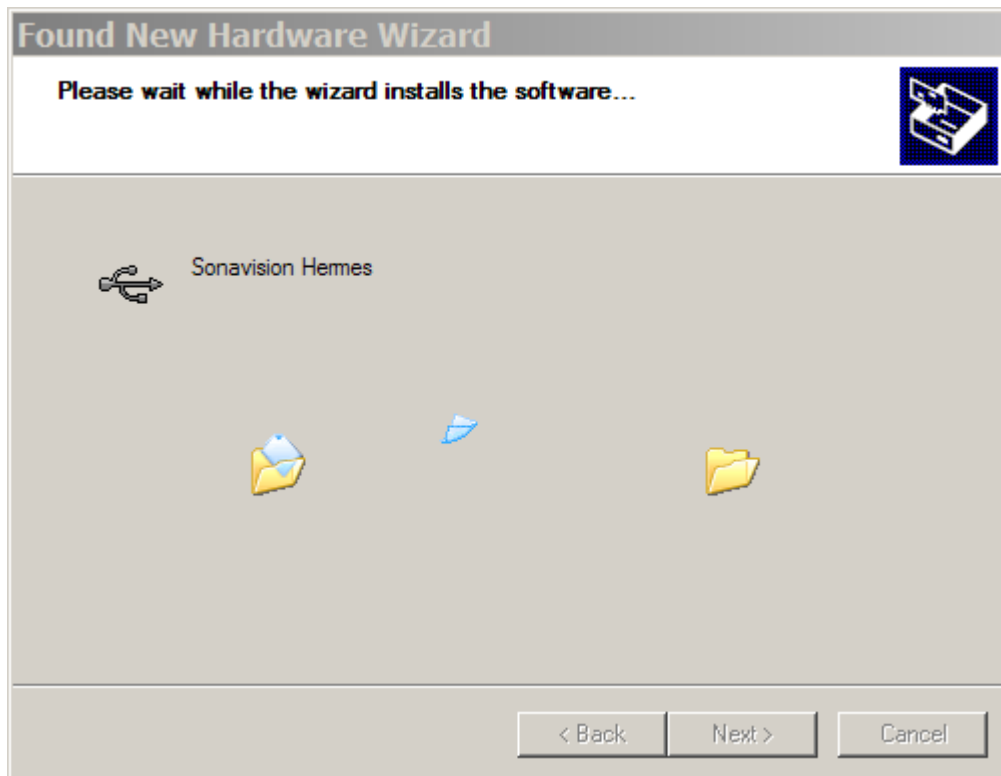
8. Power up the multiplexer hardware and attach the the PC via the USB port. Windows will detect the new hardware and display the following screen. Select the “No, not this time” option and click “Next”



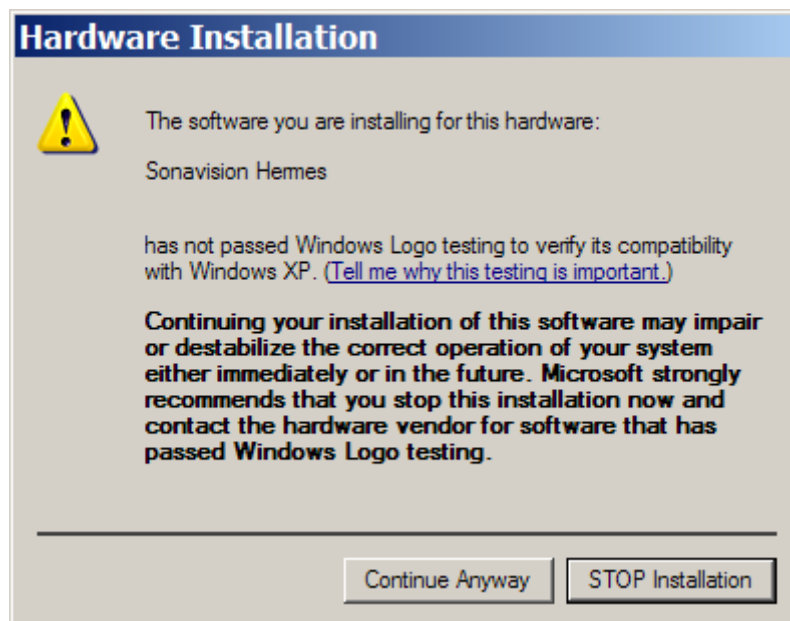
9. Ensure that the “Install the software automatically (Recommended)” option is selected and click “Next”



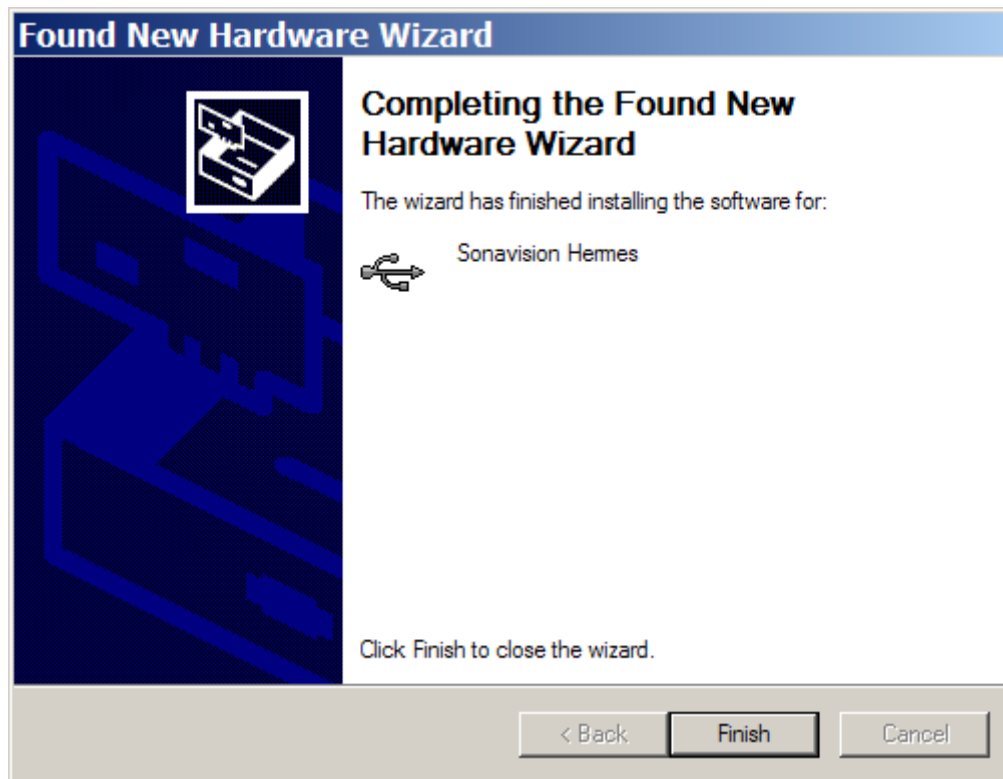
10. Windows will locate the correct drivers and begin the Hermes device driver installation.



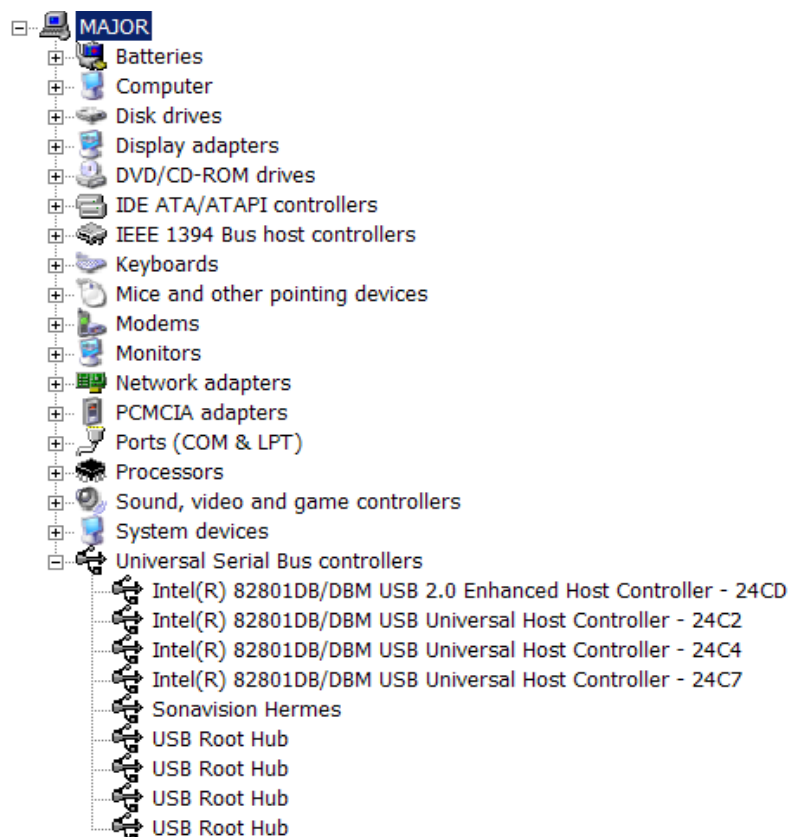
11. A warning screen will appear advising that the device drivers have not been validated by Microsoft. This is normal – click on “Continue Anyway” to proceed with the install.



12. Once the drivers have been installed the following screen will display. Click “Finish” to exit the new hardware wizard. Note that the driver installation will normally only have to be done the first time the hardware is attached to the PC, however, on some systems with multiple USB ports the process may occur again if the hardware is subsequently attached to a different USB port.



13. Upon successful installation of the Hermes device drivers check that the entry “Sonavision Hermes” appears in the Universal Serial Bus Controllers entry of the Device Manager, as shown below



Software Removal

To remove the software click “Add or Remove Programs” in the control panel. The following indicates the software entries to be removed

