

4front

Sonavision's Newsletter

leading the way

RoxSwath to University of Hull

The University of Hull took delivery of a RoxSwath System recently, the latest product in the RoxAnn range. This system is designed to give wider seabed coverage, thus mapping the seabed more quickly and efficiently.



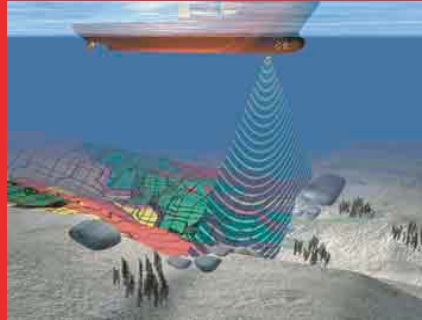
RoxSwath System

RoxSwath interfaces with GPS, compass, pitch & roll sensors and PC enabling real-time classification data on seabed geology and associated biological communities to be logged. This data can be exported to GIS for further analysis.

Dr Jim Allen, from the University of Hull plans to use their new system in a wide variety of projects.

One of these will be carried out in conjunction with NE Sea Fisheries Committee and English Nature, investigating the impact trawls have on the seafloor off the NE coast of England.

Other future projects include investigations for offshore wind farms.



Dr Allen commented: "RoxAnn isn't a new tool for us, we've been using it since the mid 1990's and have used the existing single beam version, the portable RoxAnn GroundMaster and now we have RoxSwath!"

Other systems have been supplied to Washington College, MD USA, BIM, Ireland and the Dept of Agriculture & Fisheries, Northern Ireland.

For more information on RoxSwath, please contact Andy Williamson at:

andy@sonavision.co.uk

Dealers Wanted

Interested in joining our growing international distributor network?

Contact Alasdair Murrie at:

alasdair@sonavision.co.uk

We Went To...

RoxAnn *GD* was exhibited recently at Danfish International, Denmark along with our Danish distributor for the commercial fishing industry, Sea Master aps., based in Esbjerg.

Director, Soren Mogensen, explained that Danish skippers are looking for a competitive edge and are adaptable and receptive to alternative solutions. They believe RoxAnn *GD* is **the** technology that will allow them to achieve this.



Alasdair Murrie & Soren Mogensen

The reaction to the new RoxAnn *GD* System was great and we'll be reporting back on sales of the system into Denmark in future newsletters.

Meet Us Again At

**Pacific
Marine Expo**
Booth 931
17-19th November '05
Seattle, USA

More...

Meet the Team

Andy Williamson started working life in the sub-sea industry during the mid '80's as Production Manager with Helle Engineering after graduating. Since then he's held various senior management positions within the industry.

The resident sales expert on RoxAnn, he's based in Aberdeen but still travels quite extensively (*much to his wife's annoyance!*).

He's a bit of an expert on football, supporting Aberdeen (*well, someone has to!*). But watch out - start talking about the sport with him - you'll be there all day!



Andy Williamson

Successful Trial Results in Sale

A trip by Alasdair Murrie to our Norwegian distributor, Lateral AS, has resulted in delivery of a Mercury Sonar to Sonsub.

After trialing our sonar, Project Manager for Sonsub Mark Underhill, **liked it so much** he bought it.

It's currently being deployed in the Netherlands for its first project.



Mercury

RoxAnn Training

Things have been busy, busy, busy on the RoxAnn front recently with another training course on RoxAnn & RoxSwath Systems.

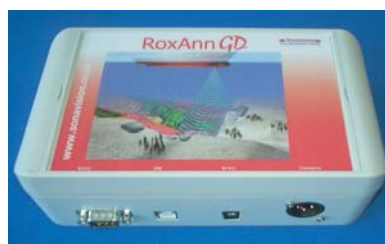
It was held at Washington College, Chestertown, MD, USA, organised by Associate Professor, Dr John Seidel and included the following:

- Intro to Seabed Classification
- Basic Acoustic Theory
- RoxAnn Operation
- RoxMap Software
- Installation: Theory & Practical
- RoxAnn Calibration & Demo
- Troubleshooting & Fault Diagnosis
- Operation and Data Collection
- Data Post-Processing

For info on the next course contact:
jseidel2@washcoll.edu

Training Day 6th Dec '05

As part of our ongoing commitment to support RoxAnn users, a training course for our distributors in the commercial Fishing industry will be held at our Aberdeen premises.



RoxAnn GD

Attendees will include all our European distributors. Other courses will be held soon for distributors from the Americas, Asia and Australasia.

For more information, please contact:

info@sonavision.co.uk

SubCom2000 System to Divex

A complete SubCom 2000 Emergency Through Water Communications System has been supplied to Divex, Aberdeen.

The communications system provides a communications link in the event of an emergency or if there is a failure in the wired communications system.



Surface Unit



Transducer



SubCom

SubCom 2000 Systems have been used world-wide for around twenty years, providing clear voice communications for divers and supervisors.

Like to find out more? Contact us at:

info@sonavision.co.uk

**Need
RoxAnn
training?**

**For your tailored
course, contact us at:
info@sonavision.co.uk**