

# 4front

## Sonavision's Newsletter

*leading the way*

### RoxAnn Swath Development

The RoxSwath is the latest development to the RoxAnn range, designed to give wider seabed coverage than single beam surveys, mapping the seabed more quickly & efficiently, thus decreasing survey costs.



Originally the RoxAnn System was designed for use with a single beam echosounder, using a patented technique to analyse data from the 1st & 2nd echo returns from the seabed.

This allows the user to build seabed maps, 2/3 D colour-coded by material type in real time. However, as data was collected from a single beam, it was limited to the area covered by the trackline.

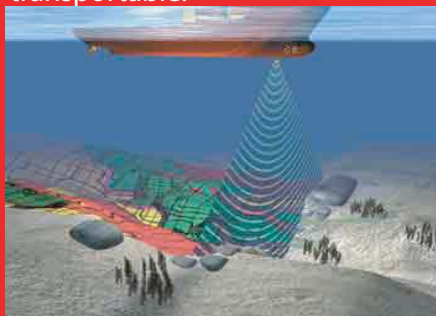
The development team led by Bob Wilkinson, Technical Director, spent 5 years R&D analysing data collected off vertical transmission.

**The result?** - multi-beam mapping of seabed material types.

The system collects data in a track width up to 1.5 times depth & can be used from 5 to 60m water depths.

RoxSwath interfaces with GPS, compass, pitch & roll sensors & PC to enable real-time data classification and mapping of the seabed geology and associated biological communities using RoxMap Data Collection and Mapping Software. Position, time, depth, & classification data are logged at regular intervals and can be exported to GIS for further analysis.

Designed for use in small vessels & on vessels of opportunity, the RoxSwath is robust and environmentally protected. Supplied with its own dedicated transducer on a stainless steel pole for overside mounting, it is compact and easily transportable.



To date systems have been supplied to Washington College, MD USA, BIM, Ireland and Dept of Agriculture & Fisheries, Northern Ireland.

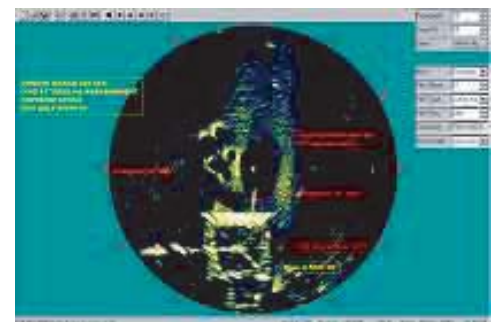
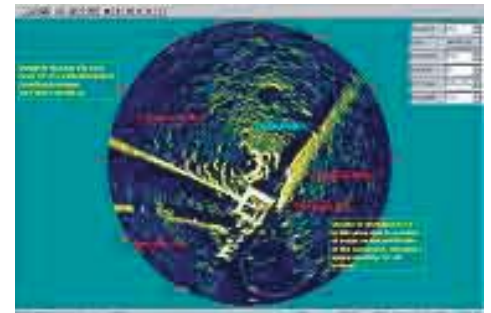
A system is available for rental from the UK and for more information contact Andy Williamson on:  
**andy@sonavision.co.uk**

### APS using Sonavision sonars in the Gulf

Since getting together at UI 2004, Sonavision and Alternative Positioning Solutions LLC, Lafayette, Louisiana have been supplying our sonars to survey and construction companies in the Gulf of Mexico.

APS selected Sonavision sonars because of the performance capabilities especially at long range.

APS have kindly provided the following screen grabs of data collected during diving operations.



With 50+ years experience, APS LLC focuses specifically on the navigation and sonar needs of the oil and gas industry.

For more information contact **John D Silvetti** on:  
Tel: 337 237 1235  
Fax: 337 234 0269  
Email: [aps-jds@cox-internet.com](mailto:aps-jds@cox-internet.com)

# More...

## SubCom2000 to Stolt Offshore Brasil

Sonavision have supplied a complete SubCom 2000 Emergency Through Water Communications system to **Stolt Offshore Brasil SA** for installation on the Seaway Harrier.

The communications system will be installed on the saturation diving bells & provide a communications link in the event of an emergency or if there is a failure in the wired communications system.

SubCom 2000 systems have a proven twenty year track record & are a familiar sight on saturation diving systems world-wide.

Using a range of frequencies from 8kHz to 37kHz, the SubCom 2000 provides clear voice communications for divers and supervisors.

## Meet the Team

We're delighted to announce that Stewart Chalmers has joined our development team. Stewart one of the new staff joining due to Sonavision's commitment to development of their product ranges.



Stewart has a strong background in electronics software and hardware & has just completed an improvement to Sonavision's sonar display software, which has improved resolution and display at fast scan speed. For a free upgrade go to the news page at :

[www.sonavision.co.uk](http://www.sonavision.co.uk)

## Meet Us Again At

## RoxSwath Training at Washington College

A training course on the operation of **RoxAnn & RoxSwath System** will be held at Washington College, Chestertown, Maryland on June 20th to 24th 2005.

This includes lectures on basic theory, operational theory, set-up & installation of equipment followed by actual field operation & post processing.

Interested? Contact Associate Professor, Dr John Seidel on:  
[jseidel2@washcoll.edu](mailto:jseidel2@washcoll.edu)

## Another Sonar Delivered!

We've just delivered an SV4000 Scanning Sonar to the Pomorski Institute, Split, Croatia.



The SV4000 is a 200kHz, 1000m rated sonar.

Deployment can be as far as 900ft from the target, critical when using as a guide for construction or diver monitoring.

## Dealers Wanted

**If you are interested in joining Sonavision's international distributor network in your local area, please contact Alasdair Murrie on:**

[alasdair@sonavision.co.uk](mailto:alasdair@sonavision.co.uk)

## User and Dealer Training Courses

### Sonavision Sonar Maintenance

SV Range April 18th Aberdeen  
Mercury April 19th Aberdeen

**RoxAnn** June 20th  
Washington College,  
MD, USA

To book a place please contact Fred Penny: [service@sonavision.co.uk](mailto:service@sonavision.co.uk)

## Borehole Camera Design

A video inspection camera, specially designed for boreholes and other vertical pipes & caissons has been designed.



The camera head has 2 view positions, one looking downwards & the other which looks at the pipe wall.

Fully waterproofed to 1000m water depths, it is suitable for use in pipes and boreholes with inside diameter of 3.5" upwards.

For more information please contact us: [info@sonavision.co.uk](mailto:info@sonavision.co.uk)

## HYPACK 2005

**We went to Hypack in Jan' 05 to demonstrate RoxSwath with Chris Mears of Washington College, MD.**

**It was great to meet so many familiar faces & we're delighted to announce that a Hypack Interface for RoxSwath is under construction. We'll keep you posted on this!**

## UUVS - September 28th-30th, Southampton